

PYROGRAPHY STATION
TEMPERATURE ADJUSTABLE THERMOSTATIC

OPERATION
INSTRUCTION

English

Made in China

Thank you for purchasing this product. Please read the manual carefully before operating and keep this manual for future reference.

● This product should not be thrown in the garbage. In accordance with the European directive 2012/19/EU, electronic equipment at the end of their life must be collected & returned to an authorized recycling facility. ● Este producto no debe desecharse en la basura. De acuerdo a la directiva europea 2012/19/EU, los equipos electrónicos al final de su vida se deberán recoger y trasladar a una planta de reciclaje autorizada. ● Dieses Produkt sollte nicht mit dem Hausmüll entsorgt werden. In Übereinstimmung mit der europäischen Richtlinie 2012/19/EU müssen elektronische Geräte am Ende ihrer Lebensdauer eingesammelt und einem autorisierten Recyclingbetrieb zugeführt werden.

Statement: The company reserves the right to improve & upgrade products, product specifications and design are subject to change without notice.

01 02

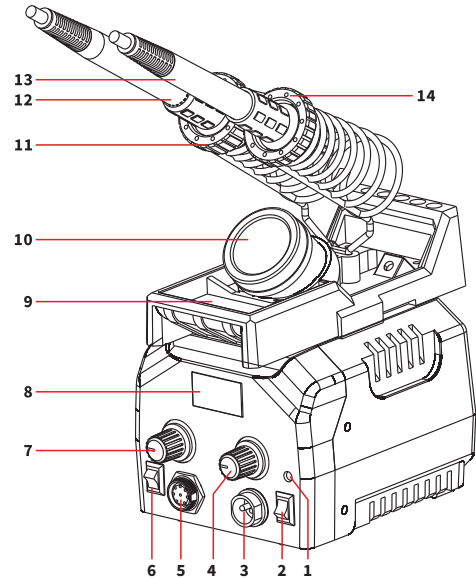
SPECIFICATION

Temperature range(temperature adjustable pen)	250°C~750°C/482°F~1382°F
Temperature range (thermostatic pen)	200°C~480°C/392°F~896°F
Main unit dimensions	L144*W125*H90 mm ±5mm
Operating ambient temperature	0~40°C/32~104°F

I. APPLICATIONS

This station is suitable for pyrography works on gourds, woods, leather, wheat stalks, tree barks, bamboos, furniture, and more.

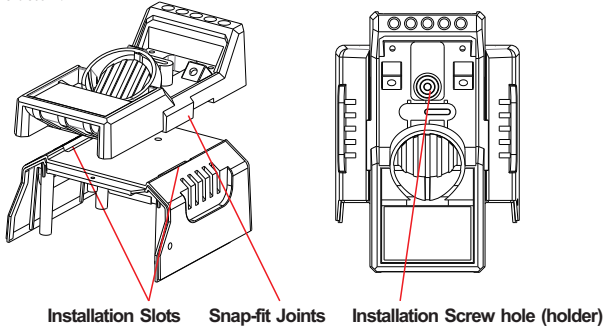
II. PRODUCT DIAGRAM



- 1. Operating Indicator Light
- 2. Power Switch (Temperature-Adjustable Pen)
- 3. Receptacle (Temperature-Adjustable Pen)
- 4. Temperature Adjustment Dial (Temperature-Adjustable Pen)
- 5. Receptacle (Thermostatic Pen)
- 6. Power Switch (Thermostatic Pen)
- 7. Temperature Adjustment Dial (Thermostatic Pen)
- 8. Temperature Display (Thermostatic Pen)
- 9. Residue Tray
- 10. Pyrography Tips Storage Tin
- 11. Pen Holder
- 12. Thermostatic Pen
- 13. Temperature-Adjustable Pen
- 14. Pen Holder

III. OPERATION

- Depending on the users' preferences, it is optional to install the pyrography pen holder either at the side of the station or on top of the station. Install the holder as per the diagrams below:



- Insert the holder's snap-fit joints into the installation slots, → Insert the screw into the holder's installation screw hole, and fasten the screw to lock the holder into place.
- Install the spring tube into the pen holder.
- Connect the pen to the station, and place the pen into the pen holder.
- Turn ON the power switch, and the tip will begin heating. The heating indicator will turn ON. You can then proceed to set the desired temperature. Begin operation once the tip reaches the set temperature.
- Once the operation is complete, place the pen back to the pen holder, then turn OFF the power switch. If the machine is not in use for an extended period, disconnect the power plug.
- Brief Introduction to the Basic Pyrography Tips



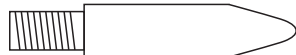
General Pyrography Tip –
For basic wood burning techniques



Smooth Round-Point Tip –
For curved lines, dots, and fine-detailing,
great for calligraphy and point-shading.

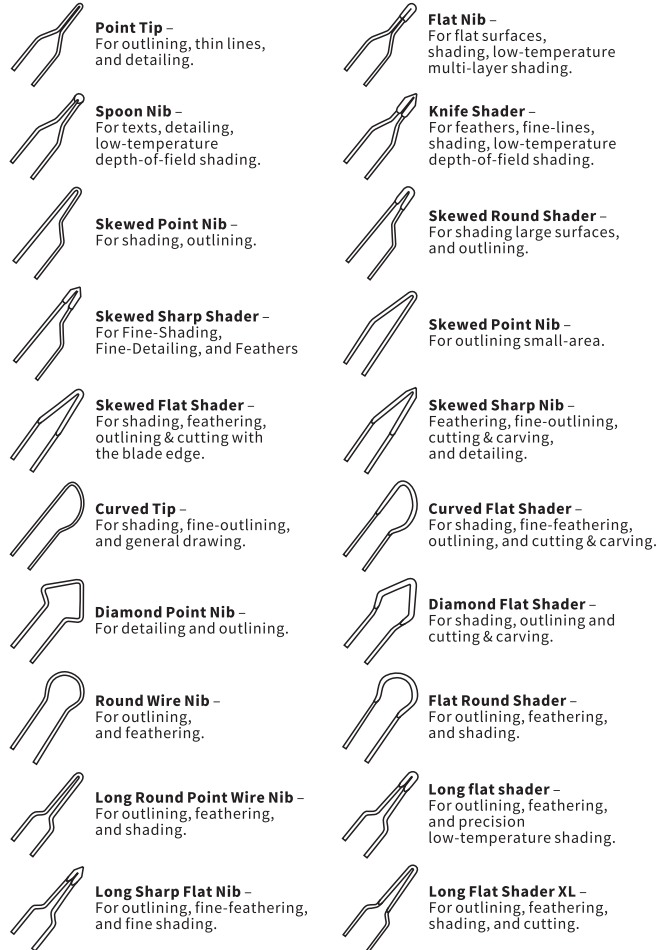


Shader Tip –
For light gradient or dark shading, you can
create smooth, evenly-colored shades.



Conical Sharp Tip –
For fine-lines, dots, and curves.

IV. THE USE OF PYROGRAPHY WIRE NIBS



03

04

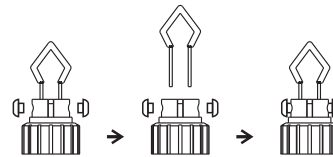
05

06

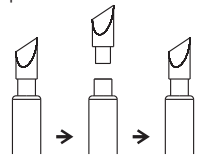
IV. MAINTENANCE & PRECAUTIONS

Replacing the tips

Unscrew the locking screws → Remove the tip
→ Install the new tip → Put the locking
screws back on



Unscrew the Pyrography Tip, change into
a new tip, and screw the new tip into the
thermostatic pen



**CAUTION: The replacement of the tip MUST be carried out when the tip is cooled.
Ensure the tip is pushed to the bottom of its slot when installing it.**

Using different tips may result in temperature discrepancies. The discrepancies can be up to 80°C/176°F.