

PRECISION HOT AIR REWORK STATION
ESD-Safe

Statement: The company reserves the right to improve & upgrade products, product specifications and design are subject to change without notice.

OPERATION
INSTRUCTION

English

Made in China

Thank you for purchasing this product. Please read the manual carefully before operating and keep this manual for future reference.

● This product should not be thrown in the garbage. In accordance with the European directive 2012/19/EU, electronic equipment at the end of their life must be collected & returned to an authorized recycling facility. ● Este producto no debe desecharse en la basura. De acuerdo a la directiva europea 2012/19/EU, los equipos electrónicos al final de su vida se deberán recoger y trasladar a una planta de reciclaje autorizada. ● Dieses Produkt sollte nicht mit dem Hausmüll entsorgt werden. In Übereinstimmung mit der europäischen Richtlinie 2012/19/EU müssen elektronische Geräte am Ende ihrer Lebensdauer eingesammelt und einem autorisierten Recyclingbetrieb zugeführt werden.

01 02

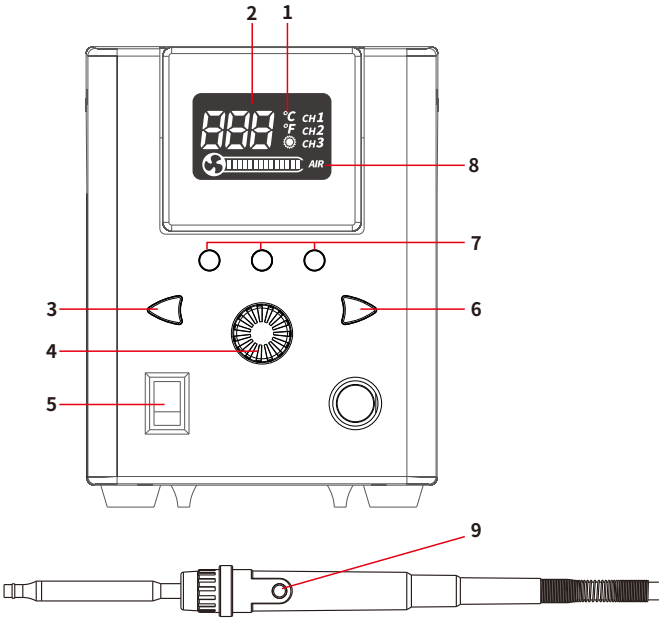
SPECIFICATION

Main unit dimensions	L222xW120xH152mm ±5mm
Operating ambient temperature	0~40°C/32°F~104°F
Airflow type	Pump motor with smooth airflow delivery
Airspeed	≤4.5m/s (with a nozzle diameter of 2mm)
Temperature range	100°C~480°C/212°F~896°F
Display	LCD

I. APPLICATIONS

1. This unit is great for desoldering and soldering applications on small components on smartphone motherboards. E.g., SOIC, CHIP, QFP, PLCC, BGA, SMD packing, and more.
2. The unit's applications include heating shrinking, drying, paint removal, glue removal, defrosting, pre-heating, glue soldering, and more.

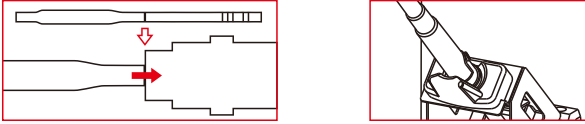
II. PART LIST



1. °F/°C Display Mode
2. Temperature Display
3. Temperature Decrease Button
4. Air Volume Adjustment Knob/Function Knob
5. Power Switch
6. Temperature Increase Button
7. Preset Channel Buttons (3 channels)
8. Simulated Air Volume Value
9. Cool/Hot Air Button/Stand-by Button (Press the button to switch between cool and hot air mode; press and hold to enter the stand-by mode.)

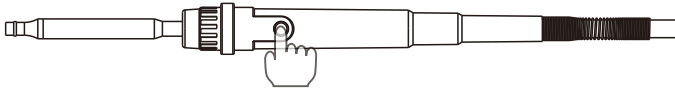
III. OPERATION

● Changing Heating Element



When installing, the heating element must be inserted to the bottom of the handpiece (Caution: The heating element must be installed and removed when it is cooled completely).

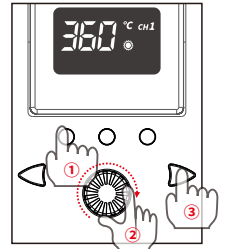
Place the handpiece into the holder. Connect the power cord. Pick up the hot air handpiece to start the hot air pencil and remove small components.



When the operation is complete, the hot air pencil **MUST** be placed into the holder to cool its heating element in cooling mode. When the temperature cools to below 100°C/212°F, the hot air pencil's temperature display will show value "----". When not in use for an extended period, turn OFF the station's power switch, and disconnect the station from the power outlet.

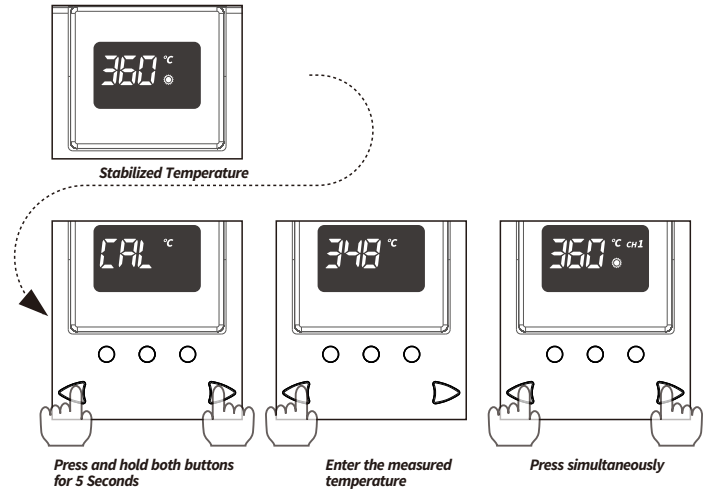
● Preset Channels Configuration (CH1/CH2/CH3)

Turn ON the power switch, press, and select the preset channel that requires preset data entry. Then, set the temperature and air volume. The channel will save the set parameters when no further entries are made for 5 seconds.



● Digital Temperature Calibration

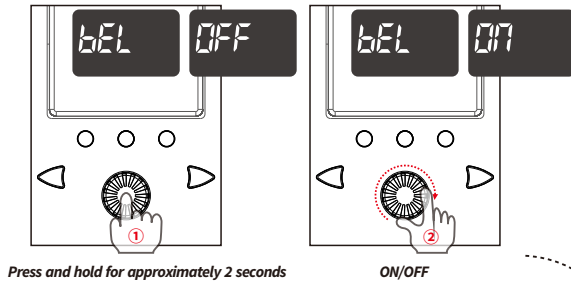
Temperature discrepancies may occur due to the change in the environment's temperature or due to the replacement of the heating element and other components. You can correct the discrepancies with this function. The temperature calibration can help improve work efficiency and extend the lifespan of the soldering iron.



03 04

05 06

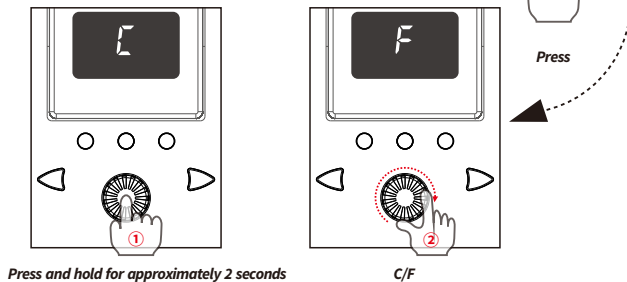
● Buzzer Prompt



Press and hold for approximately 2 seconds

ON/OFF

● °C/°F Conversion Display Switch Configuration

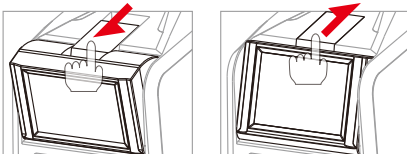


Press and hold for approximately 2 seconds

C/F

● Display Tilt Angle Adjustment

You can adjust to a better viewing angle based on different positions.



IV. MAINTENANCE & PRECAUTIONS

1. Keep the air outlet clear and free of blockages at all times.
2. The installation of the hot air nozzles **MUST** be carried out **ONLY** when the steel pipe and nozzles have cooled. Install the nozzle correctly, **DO NOT** install the nozzle with brute force, pull the edge of the nozzle with tweezers, or over-tighten the screws.
3. Select the appropriate nozzle based on your operation requirement (temperatures may vary when using nozzles in different diameters). When using nozzles smaller than the standard nozzles, you **MUST** use the maximum air volume on a relatively lower temperature setting. Complete this operation in the shortest duration possible to prevent damaging the hot air pencil.
4. Keep a minimum distance of 2mm between the subject and the hot air pencil's air outlet.
5. **DO NOT** allow the hot air to come in direct contact with facial parts, and beware of the danger of burn injuries. Upon the first use, the hot air pencil may emit white fumes, and the white fume will dissipate in a short while.

NOTE:

The station's hot air pencil uses high-strength stainless steel tubes. The station goes through 4 times or more testing, inspection, and calibration procedures before rolling off the assembly line. The steel tube may exhibit light bronze color as a result of our quality control efforts. It is normal to have a slightly bronzed steel tube when using a brandnew station, rest assured for regular usage.

V. TROUBLESHOOTING

"S-E" -This is an indication that the hot air pencil's sensor module is faulty. You need to replace the heating element (the heating element and the sensor modules).