

PYROGRAPHY STATION TEMPERATURE-CONTROLLED

OPERATION INSTRUCTION

English
939 II/939III

Made in China

Thank you for purchasing this product. Please read the manual carefully before operating and keep this manual for future reference.

Statement: The company reserves the right to improve & upgrade products, product specifications and design are subject to change without notice.

● This product should not be thrown in the garbage. In accordance with the European directive 2012/19/EU, electronic equipment at the end of their life must be collected & returned to an authorized recycling facility. ● Este producto no debe desecharse en la basura. De acuerdo a la directiva europea 2012/19/EU, los equipos electrónicos al final de su vida se deberán recoger y trasladar a una planta de reciclaje autorizada. ● Dieses Produkt sollte nicht mit dem Hausmüll entsorgt werden. In Übereinstimmung mit der europäischen Richtlinie 2012/19/EU müssen elektronische Geräte am Ende ihrer Lebensdauer eingesammelt und einem autorisierten Recyclingbetrieb zugeführt werden.

SPECIFICATION

Model number	939 II	939III
Temperature range	250°C~750°C/482°F~1382°F	
Main unit dimensions	L144*W125*H90mm±5mm	L155*W125*H90mm±5mm
Operating ambient temperature	0~40°C/32~104°F	

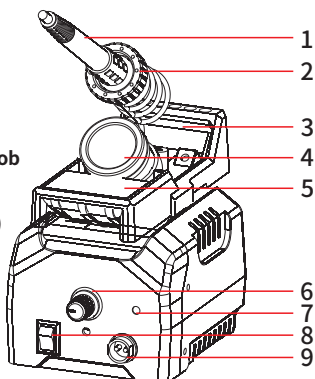
I. APPLICATIONS

This station is suitable for pyrography works on wood, gourds, leather, wheat stalks, tree barks, bamboos, furniture, and more.

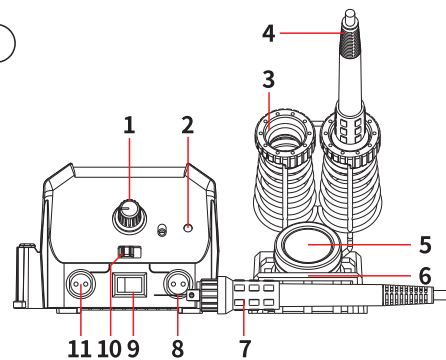
II. PRODUCT DIAGRAM

939 II

1. Pyrography Pen
2. Spring Tube
3. Pen Holder
4. Tin (Wire Nibs Storage)
5. Residue Tray
6. Temperature Adjustment Knob
7. Operating Indicator Light
8. Power Switch
9. Receptacle (Pyrography Pen)



939 III



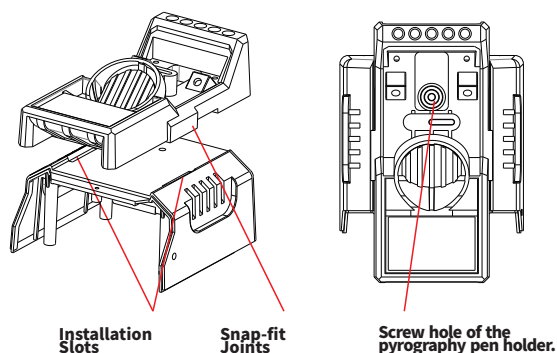
1. Temperature Adjustment Knob
2. Operating Indicator Light
3. Pyrography Pen Holder
4. Pyrography Pen (PEN B)
5. Tin (Wire Nibs Storage)
6. Residue Tray
7. Pyrography Pen (PEN A)
8. Receptacle (Pyrography Pen) (PEN B)
9. Power Switch
10. Toggle Switch (PEN A turns ON when flipped to PEN A; PEN B turns ON when flipped to PEN B)
11. Receptacle (Pyrography Pen) (PEN A)

III. OPERATION

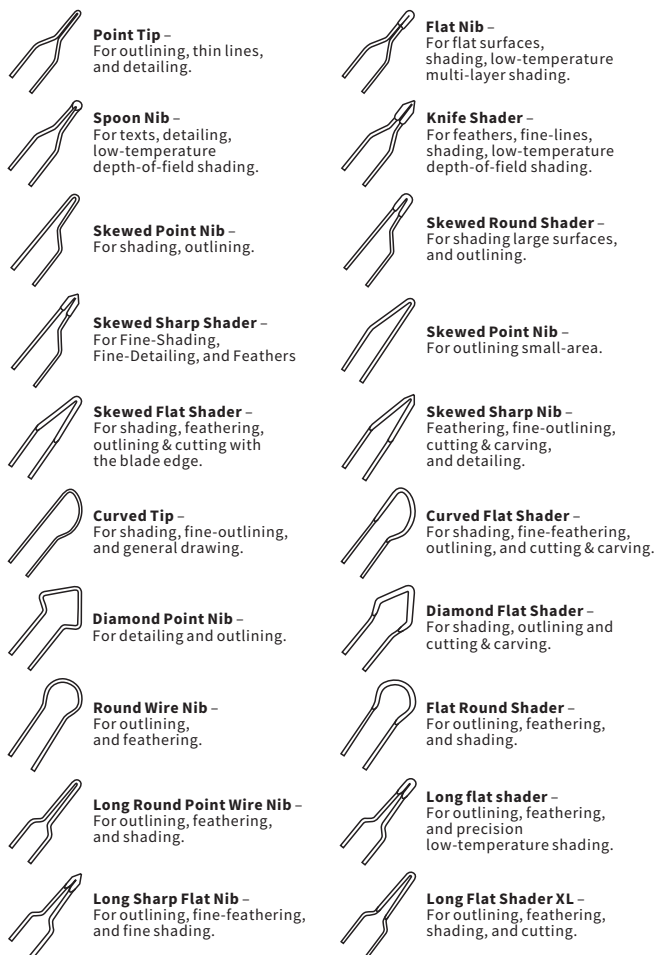
1. Depending on the users' preferences, it is optional to install the pyrography pen holder either at the side of the pyrography station or on the station's top. The installation method is illustrated in the following diagram (1-1).
2. Insert the pyrography pen holder into the installation slots → Insert the screw into the pyrography pen holder's screw hole, and fasten the screw to lock the pyrography pen holder onto the station.
3. Install the spring tubes into the pyrography pen holder.
4. Connect the pyrography pen to the station, and place the pyrography pen into the pyrography pen holder.
5. Turn ON the power switch, the pyrography pen nib will begin heating with the operating indicator light ON. Set the desired temperature and begin your pyrography work once the temperature reaches the set temperature.

6. Once the operation is complete, return the pyrography pen to the pyrography pen holder. Turn OFF the power switch. DISCONNECT the power plug if the pyrography station is not in use for an extended period.

(1-1):



IV. THE USE OF PYROGRAPHY WIRE NIBS



03

04

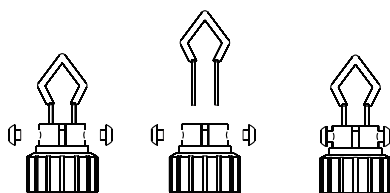
05

06

V. MAINTENANCE & PRECAUTIONS

Replacing the pyrography pen nibs

Unscrew the screws → Remove the nib → Install the new nib
→ Fasten the screws.



CAUTION: The pyrography pen nib can only be replaced when the nib is cooled off.
Ensure the nib is installed all the way in.